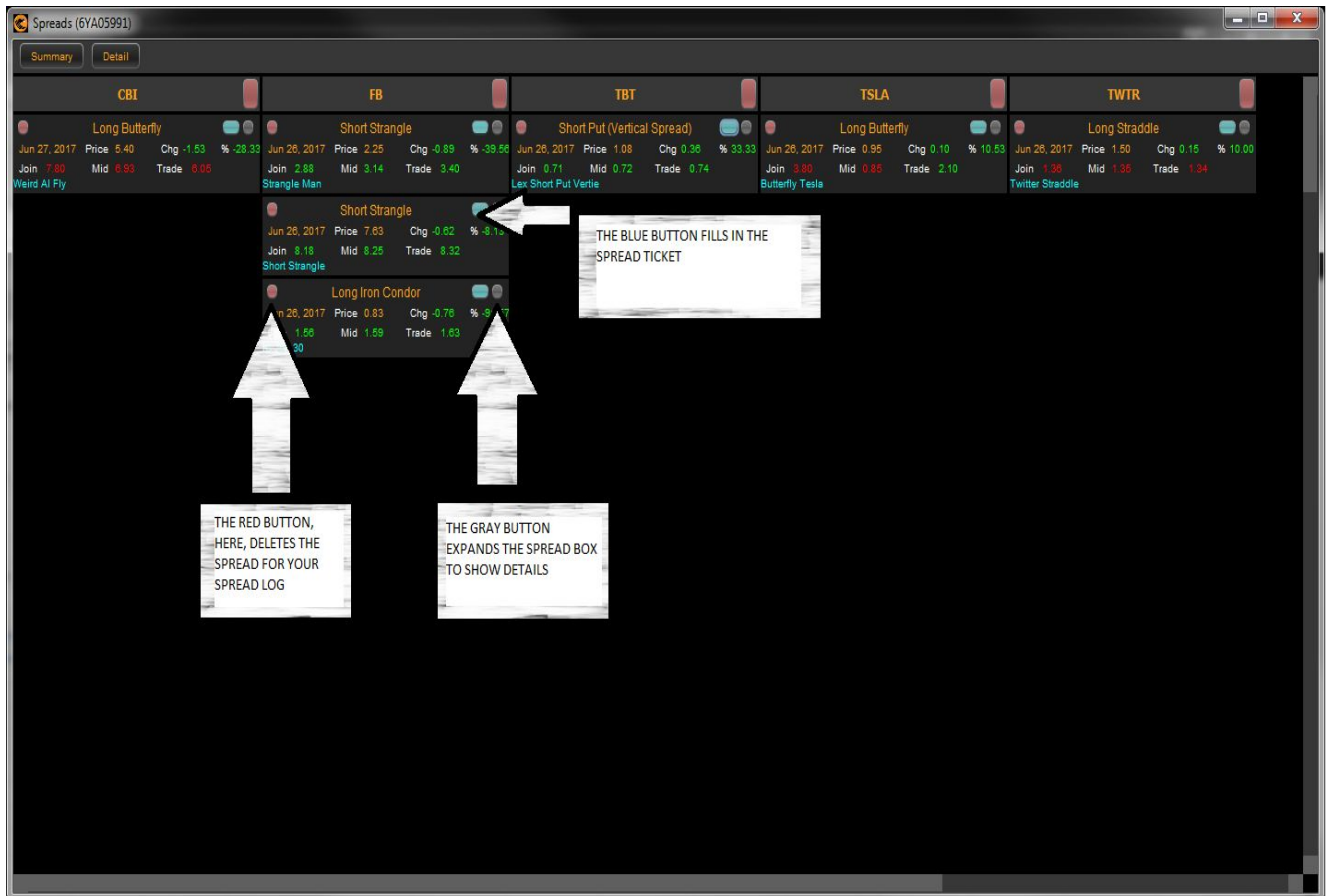




powered by  OptionEyes, LLC™

Using the Spread Log

The Spread Log is your personal “spread book” where you can load various spreads of interest and track their progress. When you wish to trade a spread from the Spread Log, you can tap the blue button in the Spread Log and your spread will be added to the Spread Builder ticket:



To place a spread in your Spread Log, follow these steps:

- Input the legs of your spread by clicking on BIDS to add BUY legs and ASKS for SELL legs in the Wisp. Tradier supports 4-legged spreads.
- Choose a price for your spread by typing a price in the box, tapping the Join, Mid, or Trade prices, or using the drop down box.
- Adjust your size by typing a quantity in the box or adjust with the drop down.
- On the Spread Builder Ticket, click the Save button.
- Enter a name for your spread.

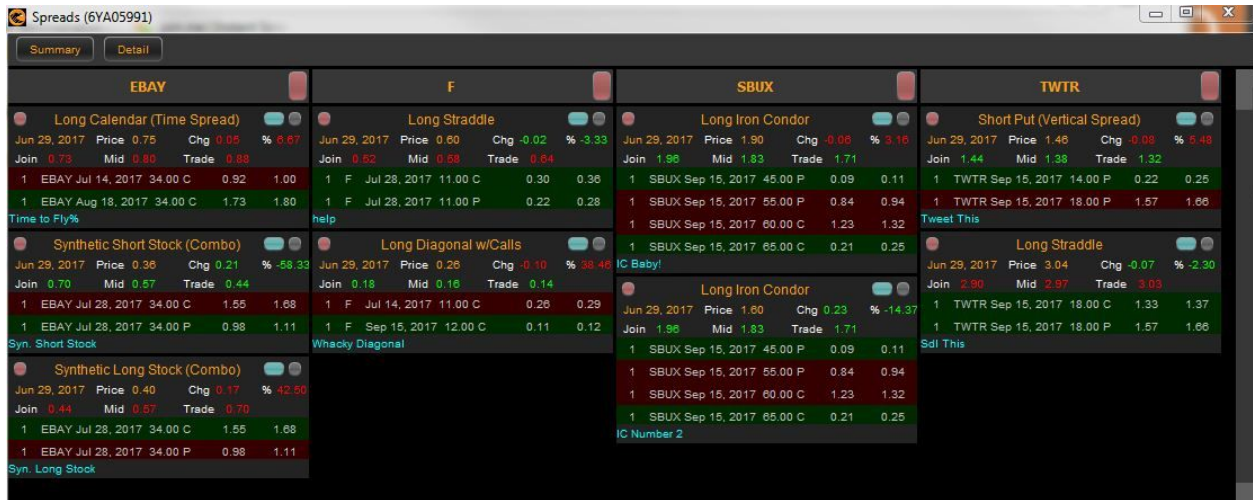


These steps will send your spread to your Spread Log with the date created and the price chosen. Now, **TradeHawk** will measure your starting price against the current market midpoint price.

Should you wish to send any of your spreads to the marketplace, follow these steps:

- Make sure your Spread Builder ticket is active in the Hawk Command Center by clicking on the yellow Spread button.

- Once your Spread Builder ticket is active, in the Spread Log, click the blue button on any spread in your Spread Log. This click will fill in the Spread Builder Ticket (above):



- Adjust price and size accordingly.
- If you wish to preview, choose the preview button and click the SEND button. This action will bring up the graph and characteristics of your spread.
- When satisfied click the SEND Order button in the Preview Window.
- If you choose not to use the Preview feature, simply tap the SEND button to launch your order!

To Delete a spread from the Spread Log:

- Tap the Red button in the individual spread box.
- You will get a message asking if you would like to Delete this spread.
- Choose accordingly.

To see the detail of your spread in the Spread Log:

- Tap the gray button in the individual spread box.
- The legs of your spread will be displayed.
- To see detail in every spread, click the Detail button at the top of the Spread Log.